



# GMT MONTHLY MEMBERSHIP PROGRESS REPORT

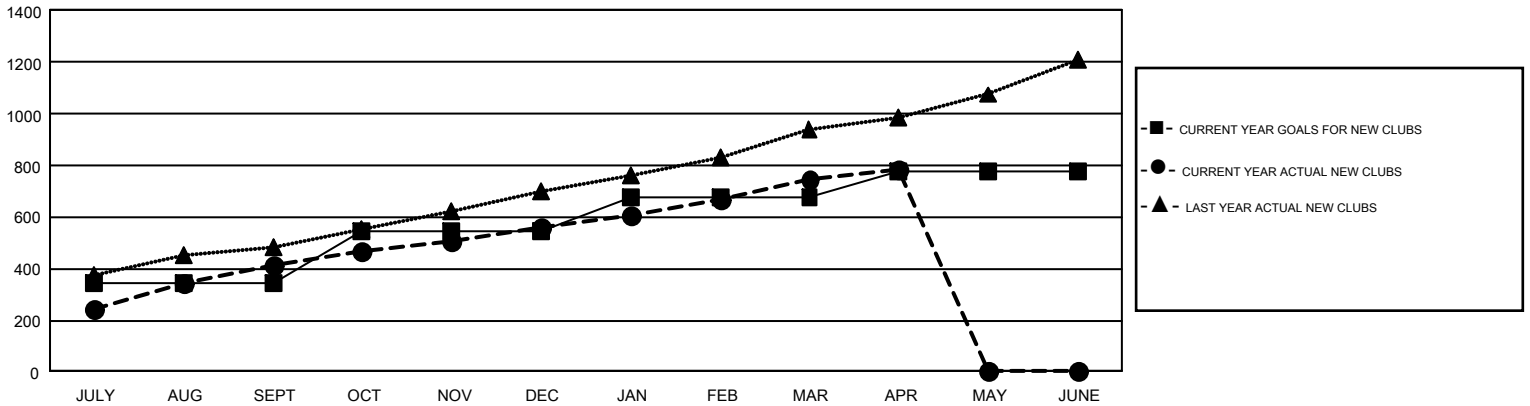
Results as of: 4/30/2019

## GAT Constitutional Area 6

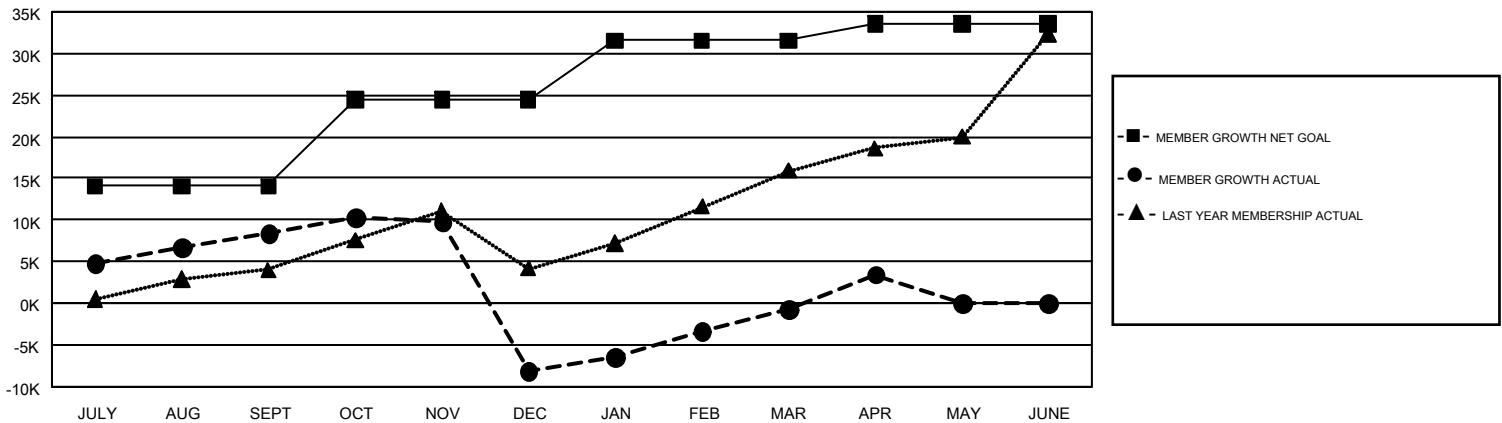
REPORT DOES NOT INCLUDE CLUBS IN UNDISTRICTED AREAS.

Clubs				Members			
RESULTS FOR 2018-2019				RESULTS FOR 2018-2019			
QUARTER	NEW CLUB GOAL	NEW CLUBS	DROPPED CLUBS	QUARTER	MEMBER GROWTH NET GOAL	MEMBER GROWTH ACTUAL	DROPPED MEMBERS ACTUAL (including transfers)
JULY/AUG/SEPT	346	413	66	JULY/AUG/SEPT	14,055	18,889	9,297
OCT/NOV/DEC	195	145	434	OCT/NOV/DEC	10,376	10,391	26,142
JAN/FEB/MAR	138	185	75	JAN/FEB/MAR	7,106	16,040	5,516
APR/MAY/JUNE	98	42	4	APR/MAY/JUNE	2,012	6,995	2,262

GOALS AND ACTUAL NEW CLUBS CUMULATIVE



GOALS AND ACTUAL MEMBERS CUMULATIVE



DROPPED CLUBS: 579	5,504 CLUBS OF 10,457 ADDED 1 OR MORE NEW MEMBERS	<b>GENDER DISTRIBUTION</b> MALE 269,838 (73.92%) FEMALE 95,183 (26.08%)
<b>DROPPED MEMBERS</b> DECEASED 673 CLUB CANCELLED 14,324 OTHER 28,217 <b>TOTAL 43,214</b>	<a href="#">CLICK HERE FOR CUMULATIVE MEMBERSHIP DATA</a>	TOTAL FAMILY UNIT MEMBERS 162,741 FAMILY MEMBERS PAYING HALF DUES 97,342